

MONTHLY MEMBERSHIP PROGRESS REPORT

LOCATION NEW MEXICO

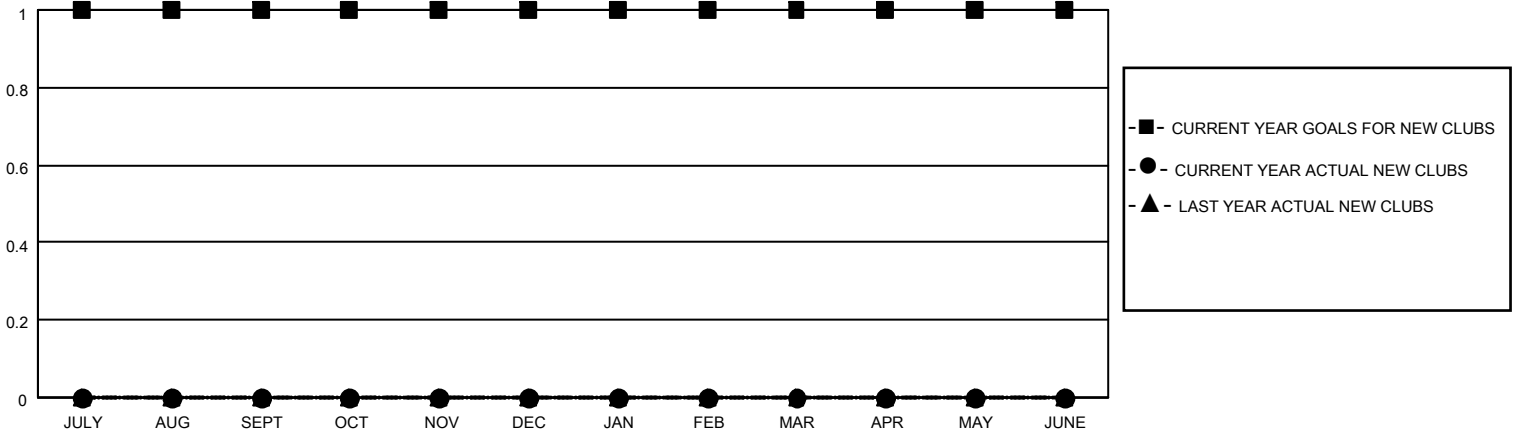
District 40 N

Results as of: 8/31/2022

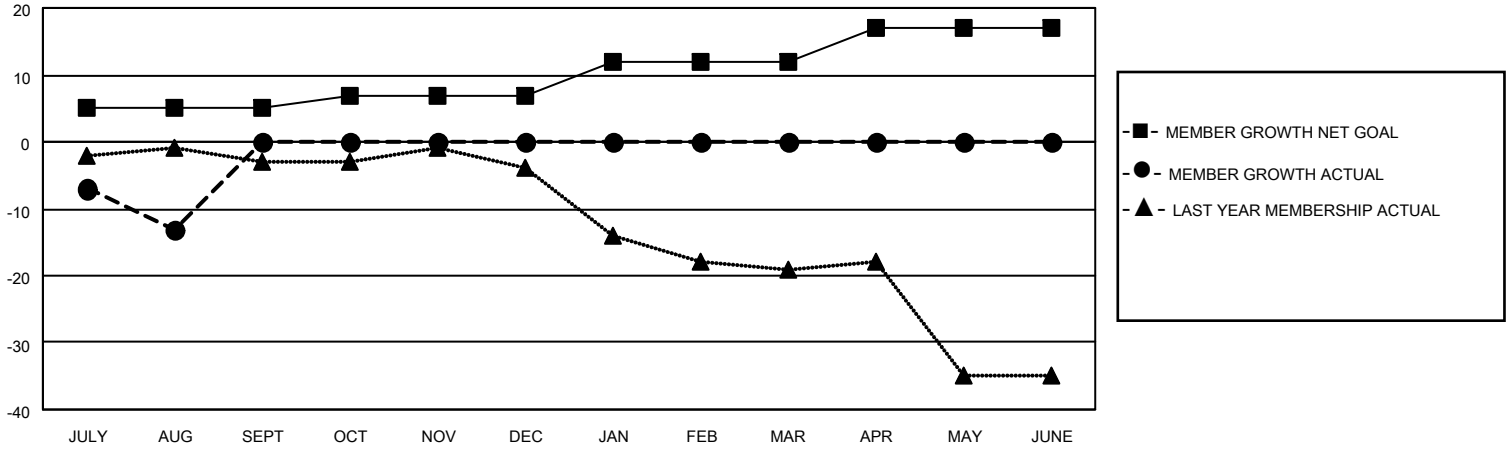
| Clubs | | | |
|-----------------------|---------------|-----------|---------------|
| RESULTS FOR 2022-2023 | | | |
| QUARTER | NEW CLUB GOAL | NEW CLUBS | DROPPED CLUBS |
| JULY/AUG/SEPT | 1 | 0 | 0 |
| OCT/NOV/DEC | 0 | 0 | 0 |
| JAN/FEB/MAR | 0 | 0 | 0 |
| APR/MAY/JUNE | 0 | 0 | 0 |

| Members | | | |
|-----------------------|------------------------|----------------------|--|
| RESULTS FOR 2022-2023 | | | |
| QUARTER | MEMBER GROWTH NET GOAL | MEMBER GROWTH ACTUAL | DROPPED MEMBERS ACTUAL (including transfers) |
| JULY/AUG/SEPT | 5 | 5 | 15 |
| OCT/NOV/DEC | 2 | 0 | 0 |
| JAN/FEB/MAR | 5 | 0 | 0 |
| APR/MAY/JUNE | 5 | 0 | 0 |

GOALS AND ACTUAL NEW CLUBS CUMULATIVE



GOALS AND ACTUAL MEMBERS CUMULATIVE



| | |
|------------------------|-----------|
| DROPPED CLUBS: 0 | |
| DROPPED MEMBERS | |
| DECEASED | 2 |
| CLUB CANCELLED | 0 |
| OTHER | 13 |
| TOTAL | 15 |

2 CLUBS OF 24 ADDED 1 OR MORE NEW MEMBERS

[CLICK HERE FOR CUMULATIVE MEMBERSHIP DATA](#)

| <u>GENDER DISTRIBUTION</u> | |
|--|--------------|
| MALE | 248 (54.75%) |
| FEMALE | 205 (45.25%) |
| NON BINARY | 0 (0.00%) |
| PREFER NOT TO ANSWER | 0 (0.00%) |
| TOTAL FAMILY UNIT MEMBERS | |
| | 110 |
| FAMILY MEMBERS PAYING HALF DUES | |
| | 56 |